

NOAA's Teacher at Sea Program

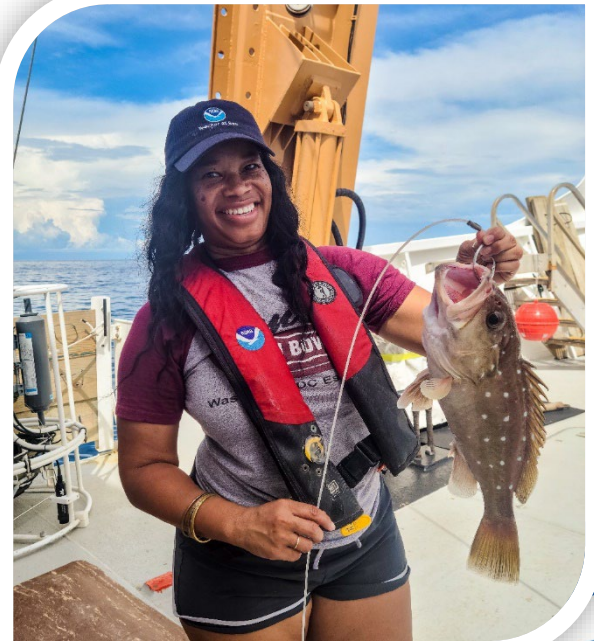
Living and Learning at Sea



**National
Marine Sanctuary
Foundation**

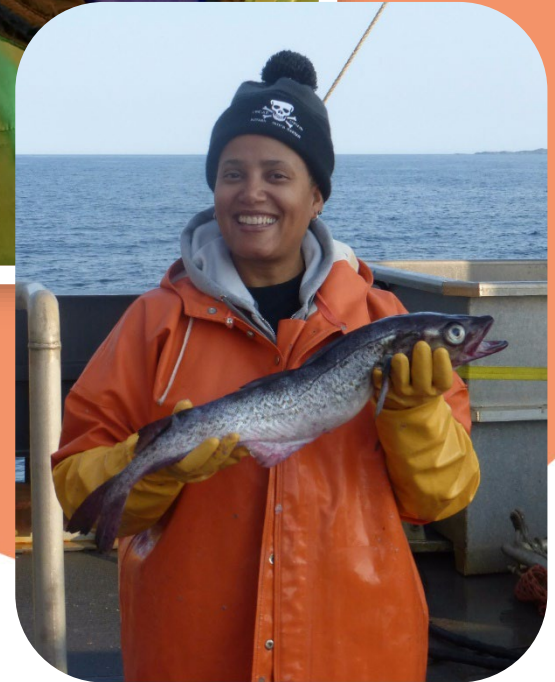
Mission

To provide teachers hands-on, real-world research experience working at sea with world-renowned NOAA scientists, thereby giving them unique insight into the oceanic and atmospheric research crucial to the nation.

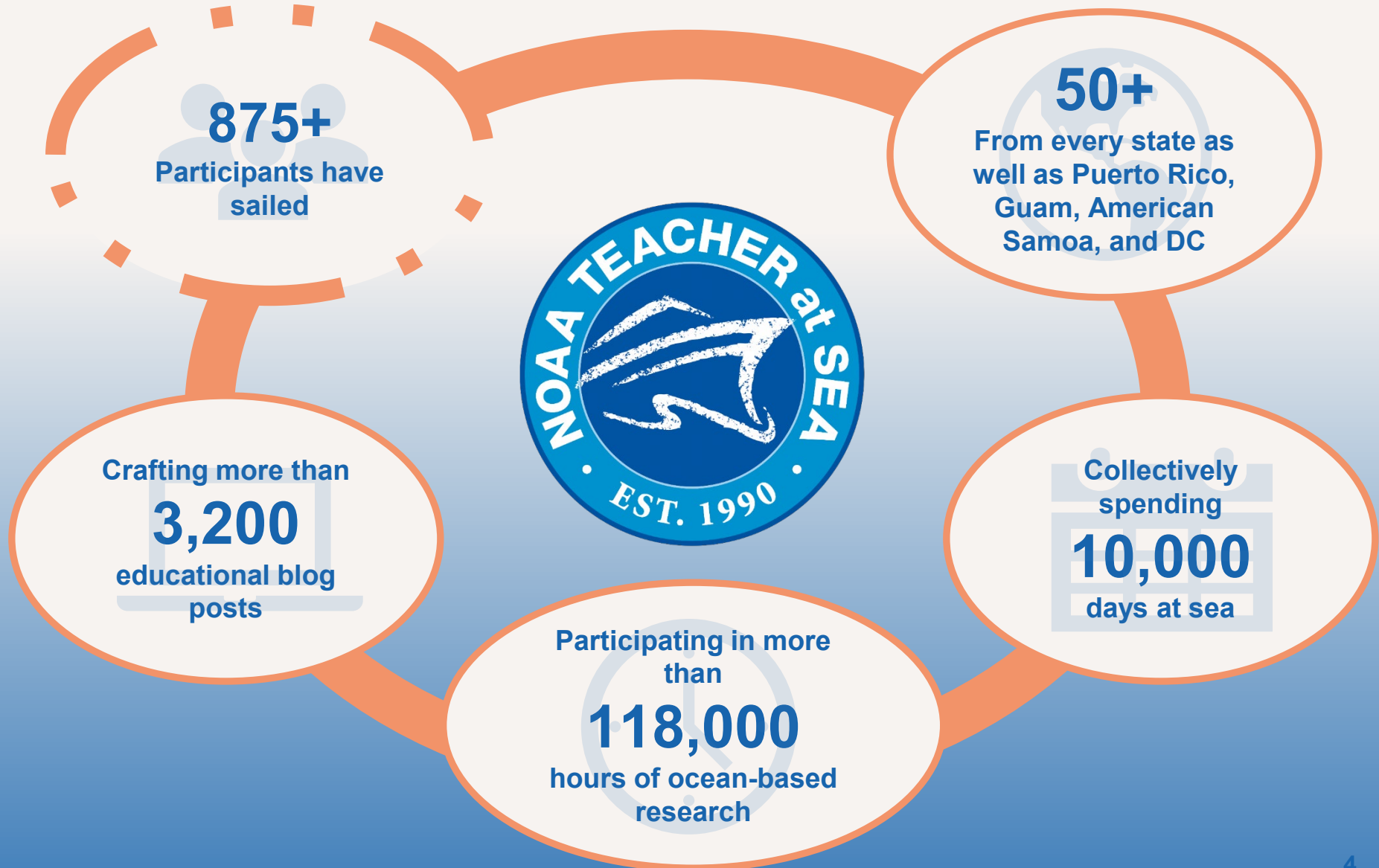


Vision

To be NOAA's main provider to teachers of opportunities to participate in real-world scientific research and maritime activities through teacher research experiences.



Since the program began in 1990...



Eligibility

Requirements



U.S. citizen or
lawful
permanent
resident



Currently employed
as a full-time preK-
12 educator,
college/university
professor, informal
educator



- Complete health questionnaire
- Receive required vaccinations



Online
application
with essay
questions



2 letters of
recommendation

When can I apply & what is the timeline?

1 Application preview available: **October**

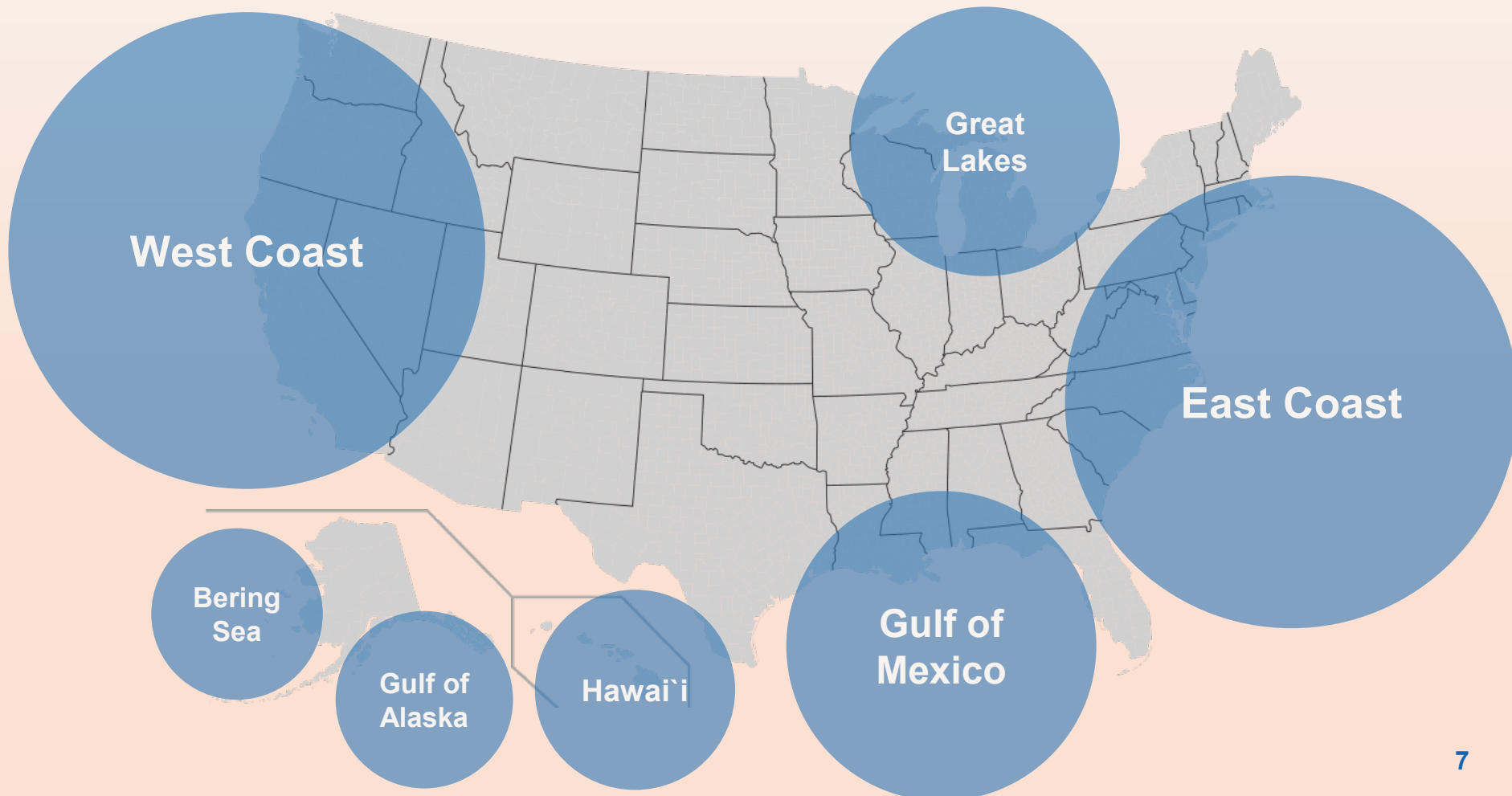
2 Online application open: **November**

3 Applicants notified of selection: **January - February**

4 Cruise placements determined: **March - May**

5 Participants sail: ~ 2 weeks
March - September

Where do NOAA Teachers at Sea sail?



A Day in the Life

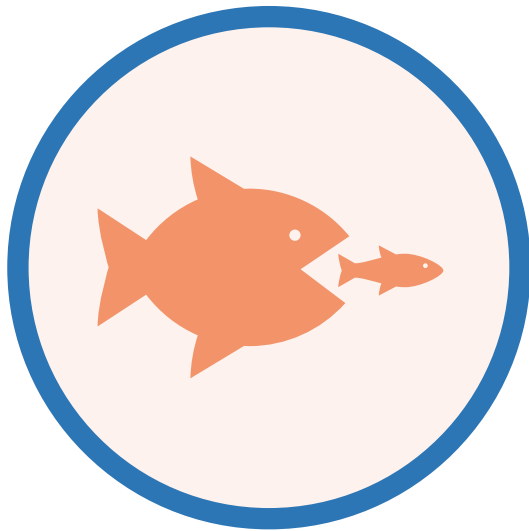
While most research cruises last 2-4 weeks, each teacher's experience is different.

Teachers at Sea are considered members of the science crew. On board, they work at the instruction of the Chief Scientist, and, like all crewmembers, follow the command of the ship's Commanding Officer or Captain.

Depending on the nature of the research work, the Chief Scientist may assign the teacher to a regular **12-hour shift** (including, potentially, overnight work. Ship and science operations happen 24/7.)



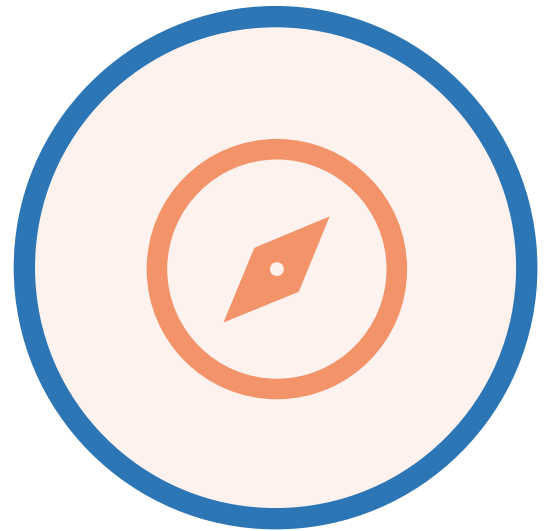
3 Main Types of Cruises



Fisheries



Oceanographic



Hydrographic

Fisheries Survey Cruises

Fisheries cruises perform biological surveys and physical science studies to help NOAA better understand our nation's fisheries.

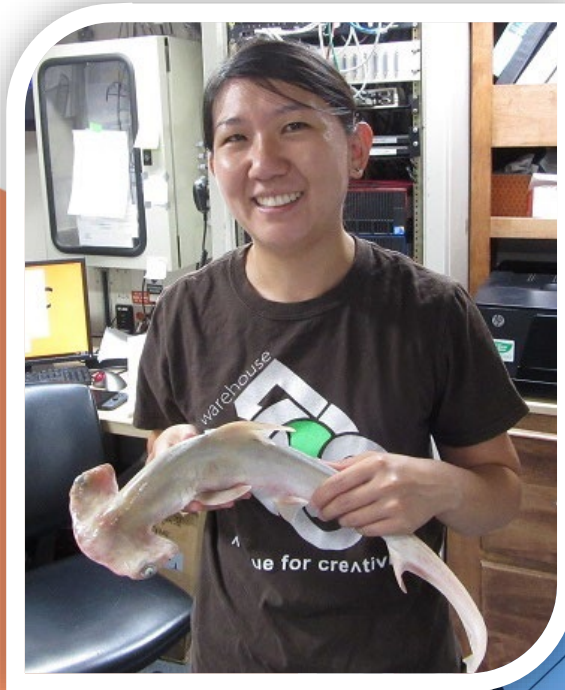
These cruises support NOAA's mission to protect, restore and manage the use of living marine, coastal, and ocean resources through ecosystem-based management.



NOAA Fisheries ships include *Henry B. Bigelow*, *Oscar Dyson*, *Nancy Foster*, *Hi'ialakai*, *Gordon Gunter*, *Oregon II*, *Oscar Elton Sette*, *Reuben Lasker*, and *Bell M. Shimada* (pictured above).

If you sail on a
fisheries cruise,
you may...

**...examine or
tag sharks**





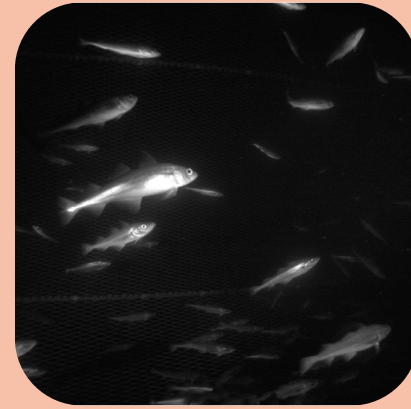
**...help sort a
trawl sample and
use an ichthystick
to measure**





**...record data
about various species**



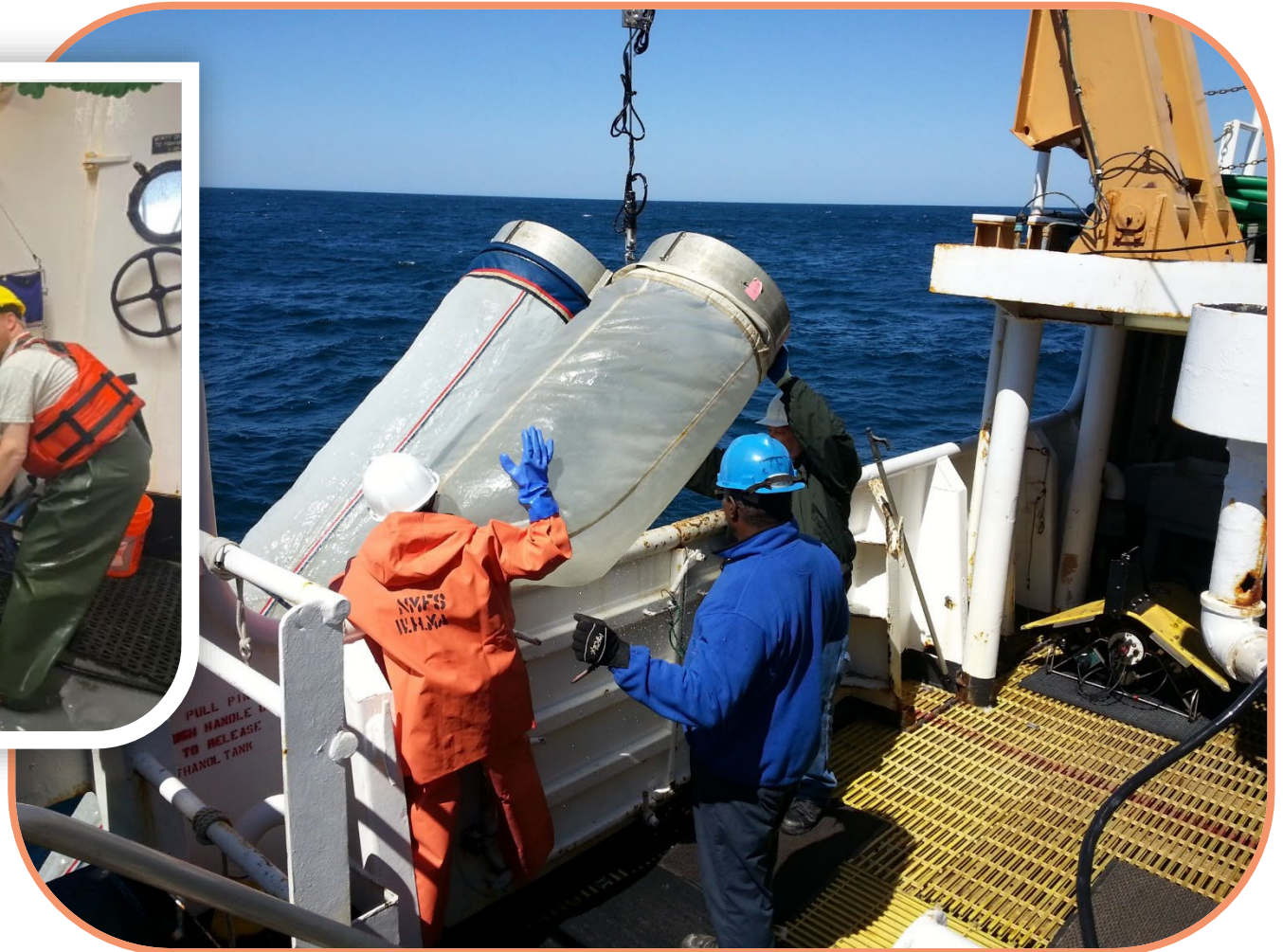
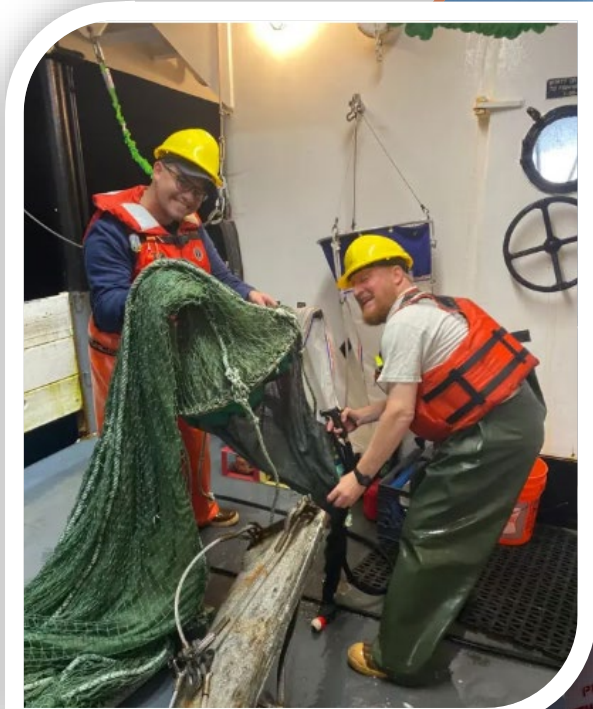


**...help deploy an
underwater camera
and examine
images**

...collect otoliths



...help deploy a bongo net or midwater trawl to collect samples



Oceanographic Survey Cruises

Oceanographic cruises perform physical science studies to increase our understanding of the world's oceans and climate. The ships deploy, recover, and service deep sea moorings around the globe that measure ocean currents, ocean temperatures, and atmospheric variables.

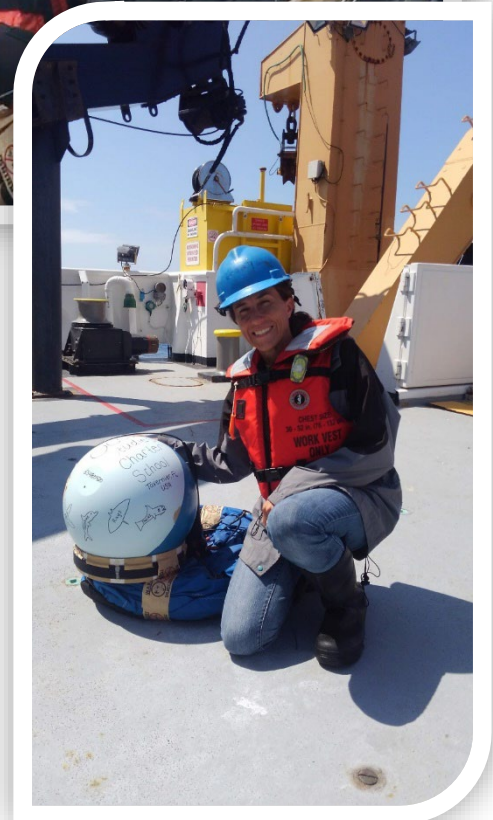
They also continuously measure upper ocean currents, surface salinity, carbon dioxide content, and sea-level atmospheric conditions while underway.



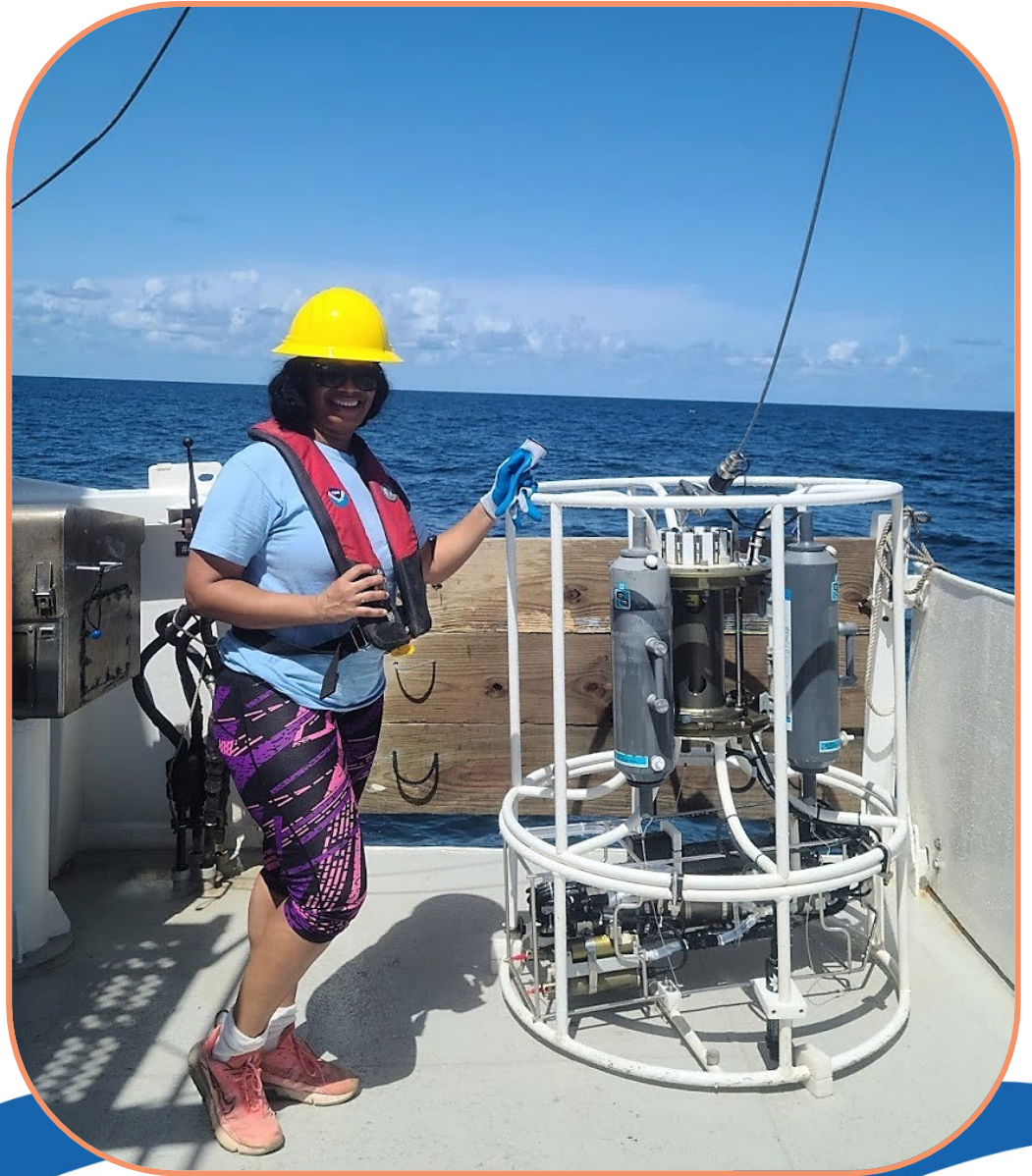
Oceanographic ships include *Ronald H. Brown*, *Nancy Foster* (pictured above), *Hi'ialakai*, and *Okeanos Explorer*.

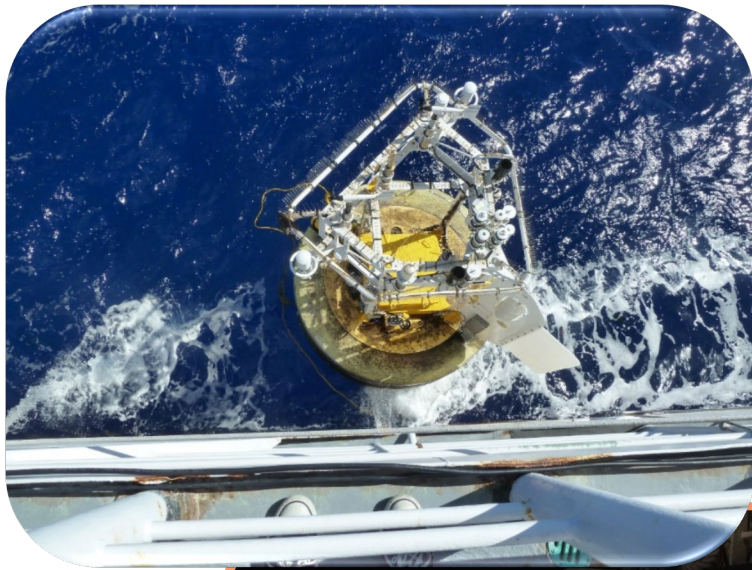
If you sail on an
oceanographic
cruise, you may...

**...deploy a
drifter buoy**



**...help deploy a
conductivity,
temperature, &
depth (CTD)
instrument**

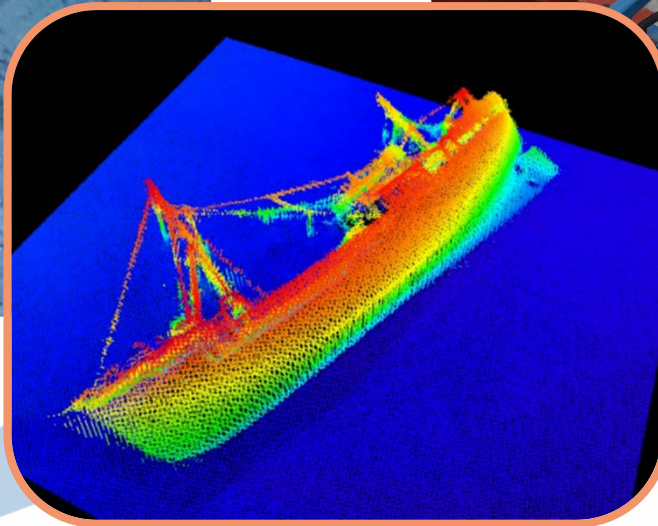




...help deploy or retrieve a data buoy



...examine a shipwreck



Hydrographic Survey Cruises

“Hydro” ships chart the ocean floor for safe navigation. Activities include echosounding, tide gauge installation, dive operations, shoreside surveying, shoreline verification and mapping, data processing, and drafting.

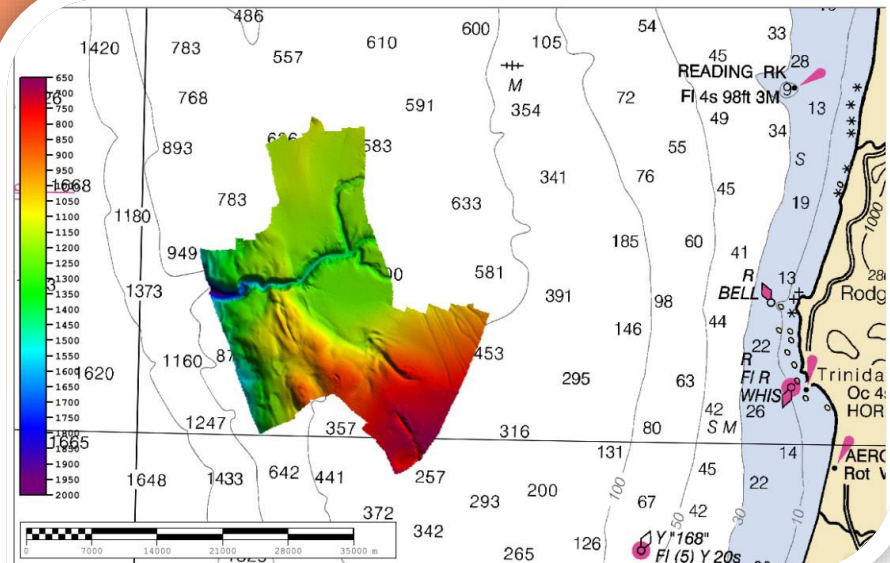
Small boat and survey launch work is conducted during daylight operations, whereas ship operations may occur during the day or night.



Hydrographic ships include *Fairweather* (pictured above), *Ferdinand R. Hassler*, *Thomas Jefferson*, and *Rainier*.

If you sail on a
hydrographic
cruise, you may...

...chart the
ocean floor



...survey shorelines from a launch



**...deploy probes
and sensors**





**...collect a
seafloor sample**



...install a tide gauge





**...set up a
base station**



On any type of
cruise, you
may...

**...help navigate
the ship**



...tour the engine room





...participate in safety drills

...observe feathered and finned friends





...meet the crew and learn about their careers



Program Videos

Why Send Teachers to Sea?

Facing your Fears

The Journey is Just the Beginning



**The journey
is just the
beginning!**



NOAA Teacher at Sea Alumni Association

Through the Teacher at Sea Alumni Association (TASAA), alumni enjoy a vibrant community of dedicated educators and continued opportunities for professional development.

Administered by the National Marine Sanctuary Foundation, TASAA helps participants who have completed their requirements build on their at-sea experience with additional connections to NOAA science and resources.



Contact info:

[insert your name]

[insert your email address]



Find out more on the web and follow the programs on social media



@noaateacheratsea

@teacheratsealumni



teacheratsea.noaa.gov
noaateacheratsea.blog
teacheratsealumni.org



@noaateacheratsea